

Using a USB Drive in ModWeigh

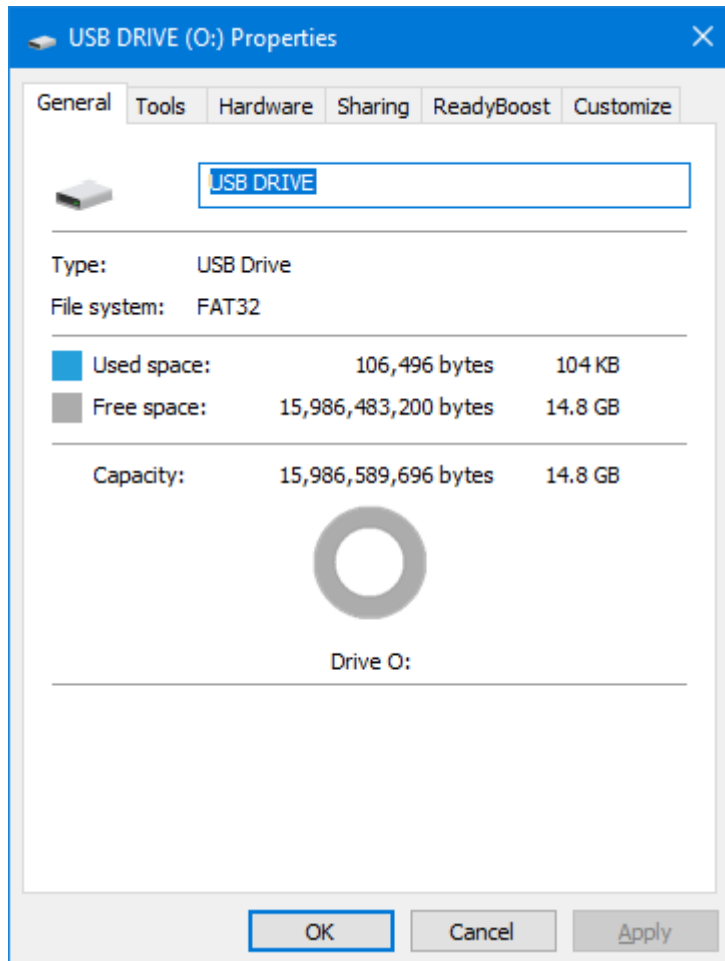
For a USB Drive to work in ModWeigh:

- 1. The USB drive must be formatted using FAT32**
- 2. The USB drive must also use the MBR partition table**

Determining if a USB drive is FAT32

In Windows open **File Explorer**.

Right click on the drive letter and click **Properties**.



The **File system** will be **FAT32**, anything else (such as exFAT or NTFS) will not work in ModWeigh units.

In Windows **File Explorer** the drive can be formatted using **FAT32** by right clicking the drive letter and then clicking **Format**, but this will erase anything already on that USB drive.

Determining if a USB drive is MBR

Use the **diskpart** command at the windows command prompt:

```
C:\WINDOWS\system32>diskpart
Microsoft DiskPart version 10.0.19041.3636
Copyright (C) Microsoft Corporation.
On computer: XXXXXXXX
```

```
DISKPART> list disk
```

Disk ###	Status	Size	Free	Dyn	Gpt
Disk 0	Online	3726 GB	205 GB	*	*
Disk 1	Online	3726 GB	3431 MB	*	*
Disk 2	Online	3726 GB	3431 MB	*	*
Disk 3	Online	931 GB	4096 KB		*
Disk 4	Online	3726 GB	0 B		*
Disk 5	Online	14 GB	0 B		

```
DISKPART> exit
```

The command is **diskpart** followed by **list disk**. Find the disk number of your USB drive by looking at the Size and finding one that is close to the size of your USB drive. The disk number will be different for each Windows PC, in this example it is disk 5.

In the **Gpt** column an asterix (*) indicates that the drive is GPT, if there is no asterix (*) then the drive is MBR.

Converting a disk to **MBR** will **erase anything already on that USB drive** and requires using the **diskpart** command at the windows command prompt.

```
C:\WINDOWS\system32>diskpart
Microsoft DiskPart version 10.0.19041.3636
Copyright (C) Microsoft Corporation.
```

```
On computer: XXXXXXXX
```

```
DISKPART> list disk
```

Disk ###	Status	Size	Free	Dyn	Gpt
Disk 0	Online	3726 GB	205 GB	*	*
Disk 1	Online	3726 GB	3431 MB	*	*
Disk 2	Online	3726 GB	3431 MB	*	*
Disk 3	Online	931 GB	4096 KB		*
Disk 4	Online	3726 GB	0 B		*

Disk 5	Online	14 GB	0 B	*
--------	--------	-------	-----	---

```
DISKPART> sel disk 5
```

Disk 5 is now the selected disk.

```
DISKPART> clean
```

DiskPart succeeded in cleaning the disk.

```
DISKPART> convert mbr
```

DiskPart successfully converted the selected disk to MBR format.

```
DISKPART> exit
```

Firstly use **list disk** to find the disk number of the USB drive. Find the disk number by looking at the Size column.

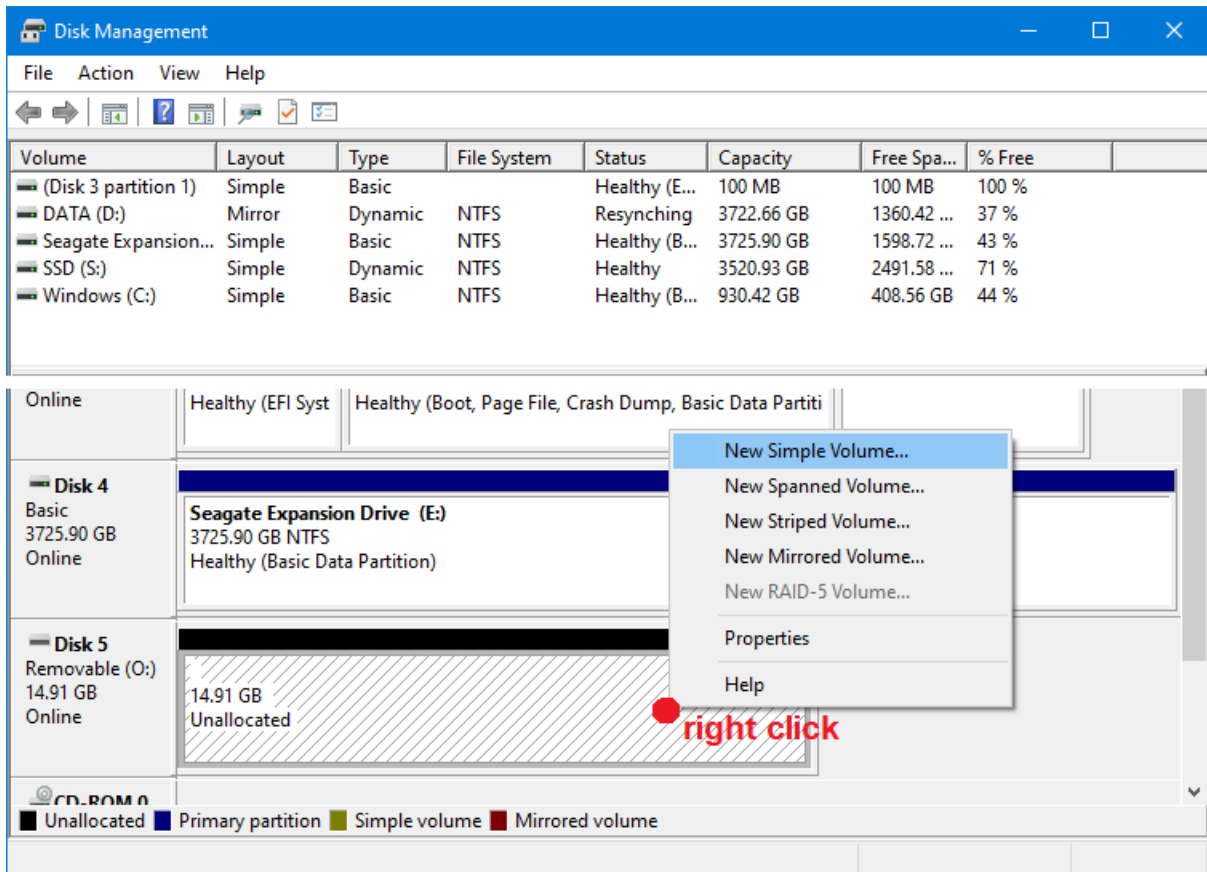
WARNING: Do not proceed unless you are sure you have the correct disk number as everything will be erased on the disk!

Next **sel disk N** is used to select the disk number of the USB drive, where N is the USB drive disk number.

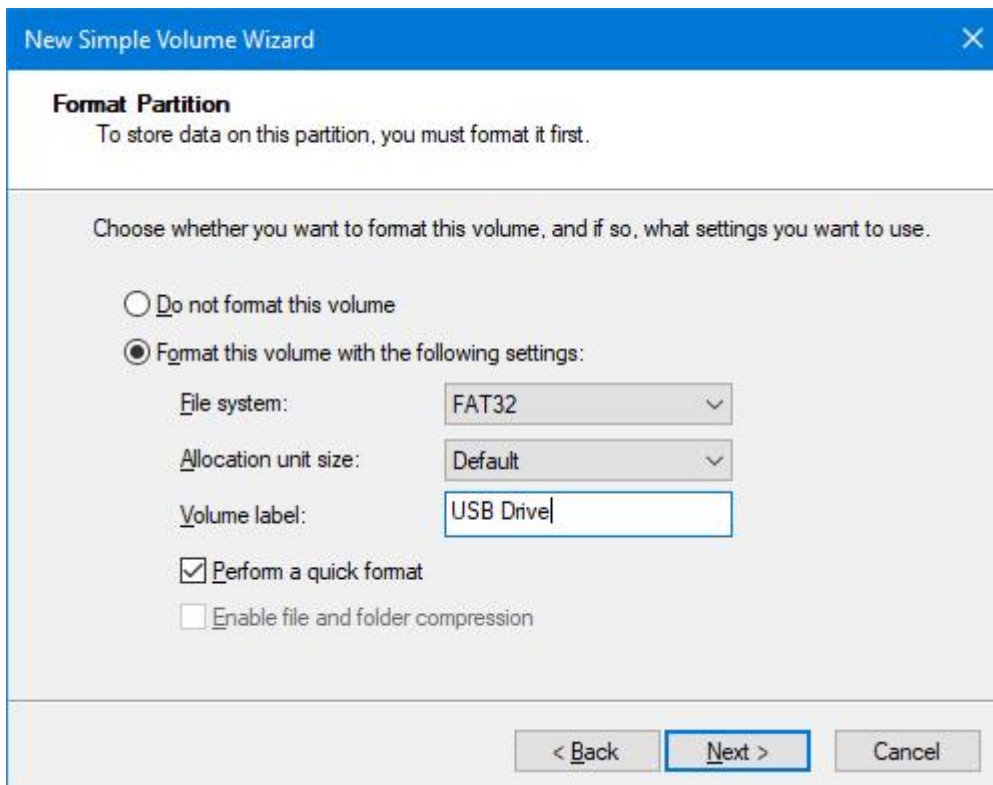
Now the **clean** command will erase everything on that disk.

Finally **convert mbr** will convert the USB drive to MBR partition table.

Now the USB drive must be prepared for use by starting the **disk manager** in Windows.



Find the USB disk number, it will be **Unallocated** as shown. Right click and then click **New Simple Volume**. Proceed until the **Format Partition** dialog box appears.



Choose **FAT32** as the **File system** and click Next to format the USB drive.

The USB drive is now ready to be used in ModWeigh units.